



Introducing  
**eco** **NEW**  
**SELECT**<sup>TM</sup>  
 CONCENTRATES

2019/2020



# eco SELECT™

**Eco Select™ Concentrates are a highly concentrated, ultra-economical range designed for professional cleaning. The range is specially formulated to deliver exceptional results in bottles designed to save space, weight, packaging and the environment.**



In our endeavour to make sustainable commercial cleaning solutions more affordable and environmentally friendly the range is easy to use with only 2 simple dilution rates.



**With Eco Select™ correct dosing, delivers great savings.**

The Eco Select™ easy dosing system guarantees accurate measurement. Simply squeeze and fill the chamber to the desired dosage and pour. Controlling the dose avoids excessive product being used and so reduces costs and guarantees product efficiency.

# Why Choose Eco Select™?



## Easy dilution – just add water

Only 2 dilution rates – 10ml for 600ml trigger sprays and 20ml for a standard 5 litre bucket.  
The built-in calibrated dosage spout dispenses the correct amount every time.  
Remove the cap, squeeze the bottle and pour – simple!



## Less transport, storage, weight and 100% recyclable

Because Eco Select™ is super concentrated, it only requires a small bottle meaning it takes up less space, is easier to transport and store, plus is highly cost effective.

**All Eco Select™ bottles are 100% recyclable after use.**



## Colour coded

A strong colour scheme with clear, simple colours and a 'quick & easy – one look' coding reference, perfect for busy professionals.



# Easy To Use

## Step 1

Fill the trigger bottle with 600ml of clean water.



## Step 2

Remove concentrates cap, squeeze and pour in the required 10ml dose.



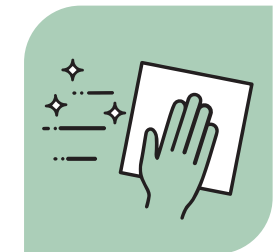
## Step 3

Replace trigger cap and shake gently to mix.



## Step 4

Ready to use.





# eco SELECT™

All of the Eco Select™ range has been carefully designed to meet the specific needs and challenges of industrial cleaning applications. Available in 1ltr bottles for easy dilution and 2ltr bottles for machine dispensing.

## Our NEW Eco Select™ range includes:

- ✓ ES1 & ES6 – Sanitiser
- ✓ ES2 & ES7 – Washroom Cleaner
- ✓ ES3 – All Purpose Cleaner
- ✓ ES4 – Hard Surface & Floor Cleaner
- ✓ ES5 & ES8 – Degreaser



### Sanitiser

- Kills 99.99% of germs in 30 seconds (passes BS EN 1276)
- Non-bleach formula
- Suitable for most surfaces
- Fragrance free

Usage Code	Order Code	Pack Size
ES1	800-304-0017	4 x 1ltr
ES6	800-299-0012	4 x 2ltr



### Concentrated Washroom Cleaner

- Kills 99.99% of germs (passes BS EN 1276)
- Removes limescale & soap scum
- Cleans, disinfects & leaves a sparkling shine
- Forest fragrance

Usage Code	Order Code	Pack Size
ES2	800-304-0020	4 x 1ltr
ES7	800-299-0013	4 x 2ltr







### All Purpose Cleaner

- Multi-surface use
- Streak free finish
- Excellent degreasing power
- Floral fragrance

Usage Code	Order Code	Pack Size
ES3	800-304-0021	4 x 1ltr



### Hard Surface & Floor Cleaner

- Suitable for most surfaces & floors
- Streak free finish
- No rinsing required
- Ocean fragrance

Usage Code	Order Code	Pack Size
ES4	800-304-0022	4 x 1ltr



### Degreaser

- Superior degreasing power
- Cuts through grease & grime
- Low smear formula
- Fragrance free

Usage Code	Order Code	Pack Size
ES5	800-304-0019	4 x 1ltr
ES8	800-299-0015	4 x 2ltr

## Accessories

To complete your cleaning and hygiene tasks we offer a premium quality, professional standard 600ml trigger bottle and spray head.

Designed to be refilled and reused the bottle is available with 5 different Eco Select™ labels. All of the hardwearing labels feature QR codes for quick and easy on-line product reference and safety data information.



Order Code	Description	Pack Size
800-282-0001	Box of Trigger Bottles and 20 labels of each product	100
200-200-0026	Box of Trigger Heads	50
200-300-0180	610ml Eco Select™ Sanitiser Refill Label	Max 30 per order
200-300-0181	610ml Eco Select™ Washroom Cleaner Refill Label	Max 30 per order
200-300-0182	610ml Eco Select™ Degreaser Refill Label	Max 30 per order
200-300-0183	610ml Eco Select™ Hard Surface & Floor Cleaner Refill Label	Max 30 per order
200-300-0184	610ml Eco Select™ All Purpose Cleaner Refill Label	Max 30 per order

# Professional User Support

More than just industry leading cleaning and hygiene solutions, the Eco Select™ range is fully supported by our expert team who can provide free consultations nationwide so you can find the perfect solution for your cleaning requirements.

## Wallcharts

A selection of printed Wallcharts and a Multi-lingual COSHH poster are also available on request, please contact our Sales Department [orders@mirius.com](mailto:orders@mirius.com) to find out more.



General Hygiene Wallchart  
Order Code: 200-400-1061

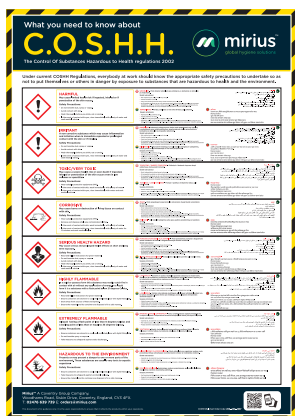


Catering & Food Hygiene Wallchart  
Order Code: 200-400-1062



Washroom Hygiene Wallchart  
Order Code: 200-400-1063

## COSHH Sheet



Multi-lingual COSHH Poster  
Order Code: 200-400-1007

## Information Sheets

Technical and Safety Data Sheets are all fully available to download for the entire Eco Select™ range at [www.mirius.com](http://www.mirius.com)



To download Safety Data Sheets please scan me







For more information on Eco Select™  
and the Super Professional range

Call: **02476 639 739**

Email: **sales@mirius.com**

Web: **www.mirius.com**



**Mirius™** A Coventry Group Company,  
Woodhams Road, Siskin Drive, Coventry,  
England, CV3 4FX

**Order Code:** 200-400-1023

